

# MONITOR ARMS







## Why should I invest in a monitor arm?

Let us turn the question... why should your body adapt to your workplace? With our monitor arms it doesn't need to. We have now widened our range to make sure we have a solution for every possible need.





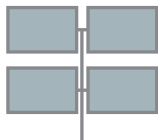
## ‘OSLO’ MONITOR ARMS

The “Oslo” range is a program filled with solutions for monitor suspension to make sure we meet our users demands for quality, design and mobility. It is a so called Standard arm with movable joints. Most suitable for the person which is stationed at the one and same workstation. We only work with solid made details, which ensures highest possible quality. If you’re moving between workstations a better option is our “Stockholm” range.

### Benefits of ‘OSLO’



**FLEXIBLE JOINTS:**  
GREAT MOBILITY WITH  
RETAINED FUNCTION.



**FOR 1, 2 OR 4 MONITORS**  
LET THE NEED DECIDE YOUR CHOICE.



**PRACTIAL CABLE HOLDERS**  
AVOID A CABLE MESS

## OSLO STANDARD

---

A simple yet stylish and steady 4-joint monitor arm for table mounting. Delivered with an elegant low profile table mount.

Arm length	465 mm
Max load	14 kg
Standard	VESA 75/100
Height, pole	300 mm
Max table top	31 mm



**438-LC15**  
MONITOR ARM LC15, SILVER



**438-LC15B**  
MONITOR ARM LC15, BLACK



**438-LC15W**  
MONITOR ARM LC15, WHITE

## OSLO WITH XL TABLE MOUNT

---

A simple yet stylish and steady 4-joint monitor arm for table mounting. Delivered with a table mount.

Arm length	465 mm
Max load	14 kg
Standard	VESA 75/100
Height, pole	400 mm
Table top	10-84 mm



**438-LC25**  
MONITOR ARM LC25, SILVER



**438-LC25B**  
MONITOR ARM LC25, BLACK



**438-LC25W**  
MONITOR ARM LC25, WHITE

## OSLO STANDARD WITH GROMMET MOUNT

---

A simple yet stylish and steady 4-joint monitor arm for table mounting. Delivered with a grommet mount.

Arm length	465 mm
Max load	14 kg
Standard	VESA 75/100
Height, pole	400 mm
Table top	10-40 mm



**438-LC26**  
MONITOR ARM LC26, SILVER



**438-LC26B**  
MONITOR ARM LC26, BLACK



**438-LC26W**  
MONITOR ARM LC26, WHITE

## OSLO WITH DUO-BAR

---

A simple yet stylish and steady 4-joint monitor arm for table mounting. Complete with a Duo-bar for 2 monitors. Delivered with an elegant low profile table mount.

Arm length	465 mm
Max load	2 × 6 kg
Standard	VESA 75/100
Monitorbracket max	c/c 750 mm
Height, pole	300 mm
Max table top	31 mm



**438-LC22**  
MONITOR ARM LC22 DUO-BAR, SILVER



**438-LC22B**  
MONITOR ARM LC22 DUO-BAR, BLACK



**438-LC22W**  
MONITOR ARM LC22 DUO-BAR, WHITE



## OSLO WITH TWIN-ARM

A simple yet stylish and steady 4-joint monitor arm for table mounting. Delivered with an elegant low profile table mount.

Arm length	2 x 465 mm
Max load	14 kg
Standard	VESA 75/100
Monitorbracket max c/c	890 mm
Height, pole	300 mm
Max table top	31 mm



**438-LC27**  
MONITOR ARM LC27 TWIN-ARM, SILVER



**438-LC27B**  
MONITOR ARM LC27 TWIN-ARM, BLACK



**438-LC27W**  
MONITOR ARM LC27 TWIN-ARM, WHITE

## OSLO WITH TWIN-ARM, GROMMET MOUNT

A simple yet stylish and steady 4-joint monitor arm for table mounting. Delivered with a grommet mount.

Arm length	2 x 465 mm
Max load	14 kg
Standard	VESA 75/100
Monitorbracket max c/c	890 mm
Height, pole	400 mm
Table top	10-40 mm



**438-LC28**  
MONITOR ARM LC28 TWIN-ARM, SILVER



**438-LC28B**  
MONITOR ARM LC28 TWIN-ARM, BLACK



**438-LC28W**  
MONITOR ARM LC28 TWIN-ARM, WHITE

## OSLO SYSTEM-4

A simple yet stylish and steady 4-joint monitor arm for 2 x 2 monitors for table mounting. Complete with table mount.

Arm length	4 x 465 mm
Max load	20 kg
Standard	VESA 75/100
Monitorbracket max c/c	890 mm
Height, pole	700 mm
Table top	0-84 mm



**438-LC29**  
MONITOR ARM LC29 SYSTEM-4, SILVER



**438-LC29B**  
MONITOR ARM LC29 SYSTEM-4, BLACK



**438-LC29W**  
MONITOR ARM LC29 SYSTEM-4, WHITE

## OSLO SYSTEM-4, GROMMET MOUNT

A simple yet stylish and steady 4-joint monitor arm for 2 x 2 monitors for table mounting. Complete with grommet mount.

Arm length	4 x 465 mm
Max load	20 kg
Standard	VESA 75/100
Monitorbracket max c/c	890 mm
Height, pole	700 mm
Table top	10-40 mm



**438-LC30**  
MONITOR ARM LC30 SYSTEM-4, SILVER



**438-LC30B**  
MONITOR ARM LC30 SYSTEM-4, BLACK



**438-LC30W**  
MONITOR ARM LC30 SYSTEM-4, WHITE



## 'STOCKHOLM' MONITOR ARMS

For the user with high demands on flexibility Stockholm range is the perfect choice. With ease you control the position of your monitor in a second. Which makes Stockholm the best solution for activity-based offices, where different persons uses the same workstation. Regardless your length you easily put the monitor in the right position for you.

### Benefits with 'STOCKHOLM'



#### **GAS SPRING**

INTEGRATED GAS SPRING  
FOR MAXIMUM FLEXIBILITY



#### **FOR 1 OR 2 MONITORS**

LET THE DEMAND BE IN CONTROL



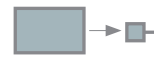
#### **HIDDEN CABLES**

INTEGRATED CHANNELS FOR  
HIDDEN CABLES



#### **BEST ERGONOMICS**

ADJUST YOUR MONITOR  
TO DESIRED POSITION



#### **'QUICK RELEASE'**

DETACH THE MONITOR  
IN SECONDS

# STOCKHOLM

## STOCKHOLM GAS SPRING ARM 3-8 KG

---

A gas spring monitor arm in elegant design. 2-armed with 5-joints for exact position and Quick-Release function. Delivered with both Table- & grommet mount.

Arm length	486 mm
Load	3-8 kg
Standard	VESA 75/100
Table top	16-50 mm



**438-LC50**  
MONITOR ARM LC50, SILVER



**438-LC50B**  
MONITOR ARM LC50, BLACK



**438-LC50W**  
MONITOR ARM LC50, WHITE

## STOCKHOLM GAS SPRING TWIN-ARM

---

Double gas spring monitor arm in elegant design. 2-armed with 5-joints for exact position and Quick-Release function. Delivered with both Table- & grommet mount.

Arm length	486 mm
Load	2 x 3-8 kg
Monitorbracket, max	c/c 878 mm
Table top	16-50 mm



**438-LC52**  
MONITOR ARM LC52 TWIN-ARM, SILVER



**438-LC52B**  
MONITOR ARM LC52 TWIN-ARM, BLACK



**438-LC52W**  
MONITOR ARM LC52 TWIN-ARM, WHITE

## STOCKHOLM GAS SPRING ARM 8-14 KG

---

A gas spring monitor arm in elegant design. 2-armed with 5-joints for exact position and Quick-Release function. Delivered with both Table- & grommet mount.

Arm length	486 mm
Load	8-14 kg
Standard	VESA 75/100
Table top	16-50 mm



**438-LC53**  
MONITOR ARM LC53, SILVER



**438-LC53B**  
MONITOR ARM LC53, BLACK



**438-LC53W**  
MONITOR ARM LC53, WHITE

## STOCKHOLM GAS SPRING TWIN-ARM 8-14 KG

---

Double gas spring monitor arm in elegant design. 2-armed with 5-joints for exact position and Quick-Release function. Delivered with both Table- & grommet mount.

Arm length	486 mm,
Load	2 x 8-14 kg
Standard	VESA 75/100
Monitorbracket, max	c/c 878 mm
Table top	16-50 mm



**438-LC57**  
MONITOR ARM LC57 TWIN-ARM, SILVER



**438-LC57B**  
MONITOR ARM LC57 TWIN-ARM, BLACK



**438-LC57W**  
MONITOR ARM LC57 TWIN-ARM, WHITE

## STOCKHOLM GAS SPRING DUO-BAR

A gas spring monitor arm in elegant design. 2-armed with 5-joints for exact position and Quick-Release function. Delivered with both Table- & grommet mount.

Arm length	486 mm
Load	2 x 6 kg
Standard	VESA 75/100
Monitorbracket, max	c/c 750 mm
Table top	16-50 mm



**438-LC58**  
MONITOR ARM LC58 DUO-BAR, SILVER



**438-LC58B**  
MONITOR ARM LC58 DUO-BAR, BLACK



**438-LC58W**  
MONITOR ARM LC58 DUO-BAR, WHITE

## STOCKHOLM HEAVY GAS SPRING, 8-19 KG.

A gas spring monitor arm in elegant design. 2-armed with 5-joints for exact position and Quick-Release function. Delivered with both Table- & grommet mount.

Arm length	570 mm
Load	8-19 kg
Standard	VESA 75/100
Table top	16-50 mm



**438-LC60**  
MONITOR ARM LC60 HEAVY, SILVER

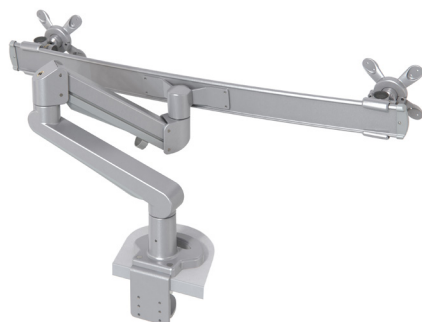


**438-LC60W**  
MONITOR ARM LC60 HEAVY, WHITE

## STOCKHOLM HEAVY, GAS SPRING DUO-BAR MAX 8-19 KG

A gas spring monitor arm in elegant design, complete with Duo-bar for 2 monitors. Delivered with both Table- & grommet mount.

Arm length	570 mm
Load	8-19 kg
Standard	VESA 75/100
Monitorbracket, max	c/c 800 mm
Table top	16-50 mm



**438-LC61**  
MONITOR ARM LC60 HEAVY DUO-BAR, SILVER



**438-LC61W**  
MONITOR ARM LC60 HEAVY DUO-BAR, WHITE