

Ergoslider Plus+

Ergonomic Pointing Device

Ergoslider



Worldclass Ergonomics!

Ergoslider™ has an extremely low, elegant design. This is to give the user absolute comfort for a natural position without tension.

All button functions are centred on the manoeuvre panel for access and natural tactility on the keyboard. The comfortably soft removable wrist support, gives a nice rest for the wrist and can be supplemented, when necessary with a larger and deeper support for increased comfort.

The uniquely removable roller bar on the Ergoslider, allows simple dirt and fluids maintenance providing long-term and problem-free operation. Ergoslider™ is easy to install (plug & play), and fulfills most user's needs with its 5-button functionality and roller bar. Copy/Paste function for both Windows and MacOS.



SPECIFICATIONS

- An elegant and compact design
- Removable roller bar for easy cleaning
- Sensor 800 dpi laser
- USB, Plug & Play
- 5 button mouse, incl. scroll and Copy/Paste
- Copy/Paste function for Windows and MacOS
- Dimensions: 390 x 102 x 23 mm
- Weight: 300 g
- 440-E801 Ergoslider Plus+ Black

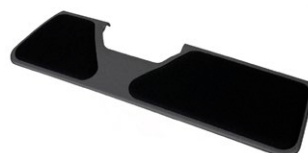
Accessories:

- 440-E815 Tailor-made Arm Support
- 440-EE03 Extended Wrist Support, Black



Tailor-made Arm Support

Is adapted for deep dock in forearm support, giving shortened distance to the keyboard for increased comfort.



Extra Wrist Support

An extended wrist support in white that provides relief for the entire wrist. Dimensions: 480 x 148 x 30 mm