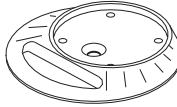




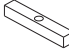



# Hold Mounting Bracket<sup>01</sup>

## PARTS AND TOOLS

<b>A</b>	×1 PCE	
<b>B</b>	×1 PCE	
<b>C</b>	×1 PCE	
<b>D</b>	×2 PCS	
<b>E</b>	×1 PCE	
<b>F</b>	×1 PCE	
<b>G</b>	×1 PCE	

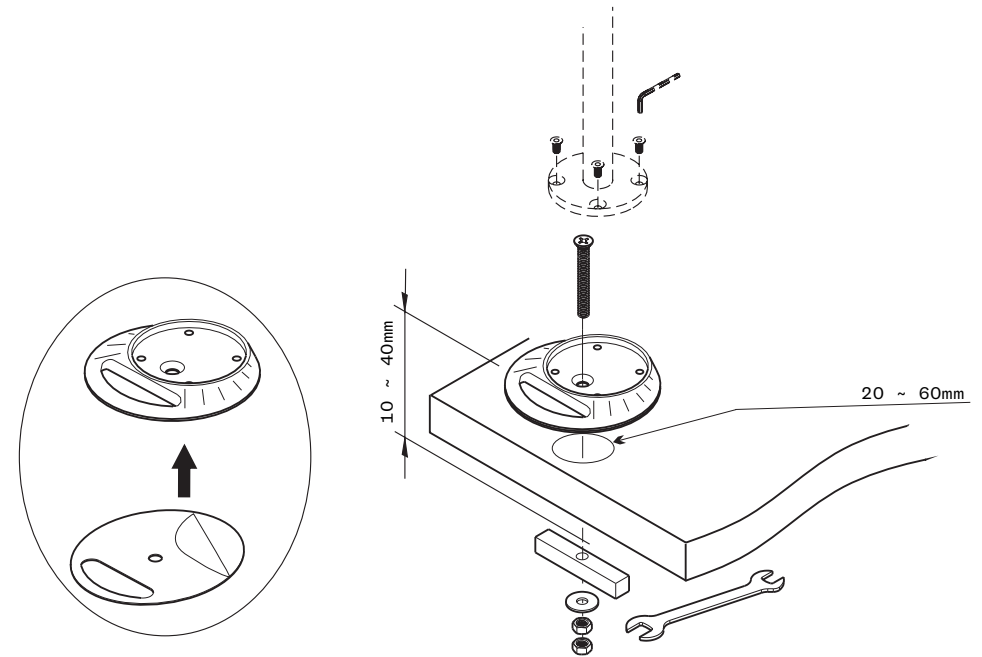
## BEFORE ASSEMBLY

Please spend some time to read this and follow the procedures step-by-step

Some panels are viewed differently from the exploded drawing below. This is for extra clarity.

Do not discard any of the packaging until you have checked all the parts and the package of fittings. If you are missing any of the parts, please contact the store from which you purchased your products. The staff will do their best to help you.

## STEP 1



Adhesive the pad under the grommet mount. Use large bolt to go thru parts (see figures) Desk thickness from 10mm~40mm. Advise for desk thickness above 30mm. The diameter of the hole is from 20mm to 60mm.