




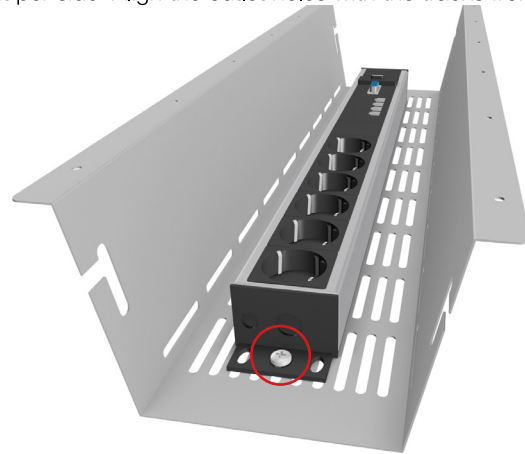
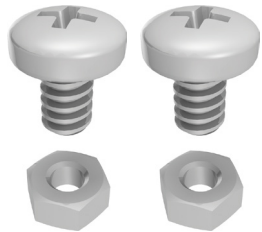
# Axessline PDU Tray

-  935-TK61W
-  935-TK61
-  935-TK61B



## 1 POSITION AND FASTEN OUTLET

Using two M6 screws and two nuts (not provided), fasten one of our recommended electrical outlets to the cable tray. Use one screw and nut per side. Align the outlet holes with the tracks from the cable tray. Consider connecting cables before mounting the cable tray to the table.



Recommended Axessline outlets:

### 935-T2DC

2 Power, 2 Data,  
2 USB, 1 VGA, 1 HDMI

### 935-T4DC

4 Power, 4 Data, 2 USB,  
1 VGA/audio, 1 HDMI

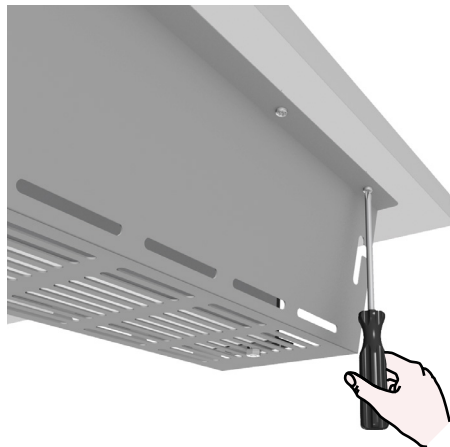
### 935-T6DC

6 Power, 4 Data/switch



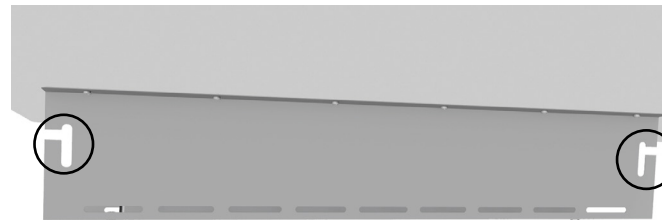
## 2 POSITION AND ATTACH

Position the cable tray and attach to the table using wood screws (not provided).



## 3 READY TO USE

Once all screws are in position, the cable tray will be able to withstand pressure needed for connecting cables.



**Tip!** Be sure to make use of the cut out cable exits. There are two on each side of the cable tray.

## 4 CONNECTING

Connect all necessary cables intended to their corresponding ports and counterparts.

