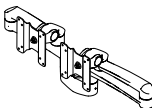
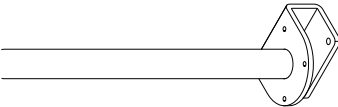











Hold Dual Monitor Arm²⁷

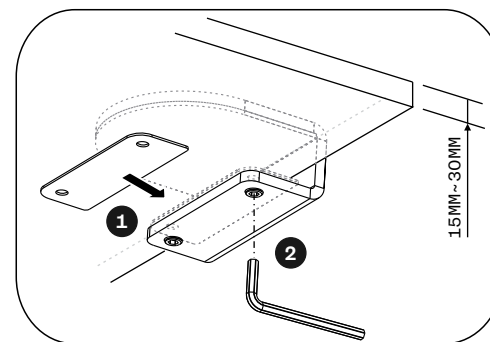
PARTS AND TOOLS

(A)	×1 PCE	
(B)	×1 PCE	
(C)	×1 PCE	
(D)	×8 PCS	
(E)	×1 PCE 4mm	
(F)	×1 PCE	
(G)	×2 PCS	
(H)	×1 PCE 2mm	
(I)	×2 PCS M8×15	
(J)	×2 PCS M8×30	
(K)	×1 PCE 5mm	

Before assembly, please spend some time reading this manual and follow the procedures step by step. Do not discard any of the packaging until you have checked all the parts.

If you are missing any of the parts, please contact the seller from which you purchased your products. The staff will do their best to help you.

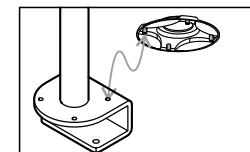
STEP 1



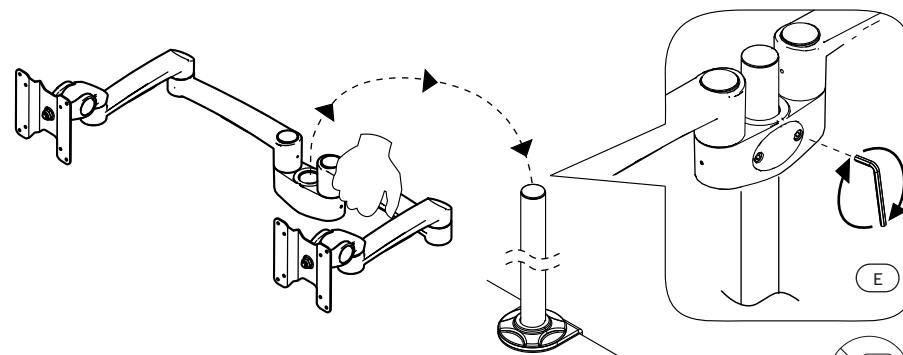
Desk thickness from 15mm~30mm.
(max 30 with pad removed).
Adjust and fix the clamp on the desk.



Then put the plastic cover through the pole and check the pin position with the hole together.



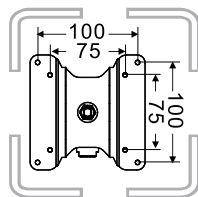
STEP 2



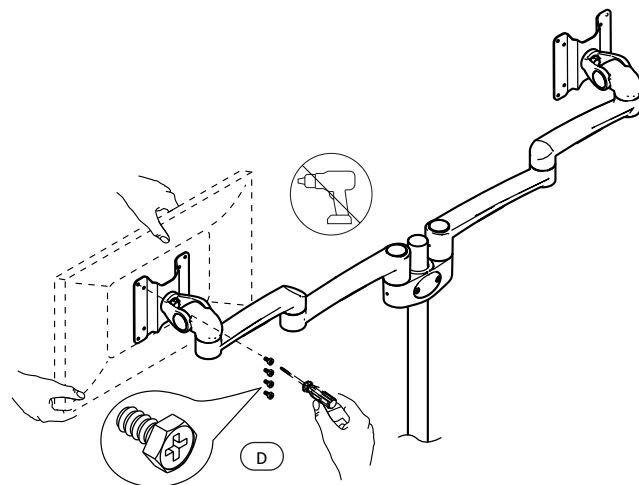
Insert the twin monitor bracket into the pole.
Adjust to desired height and fix its position
using the provided Allen key.



STEP 3

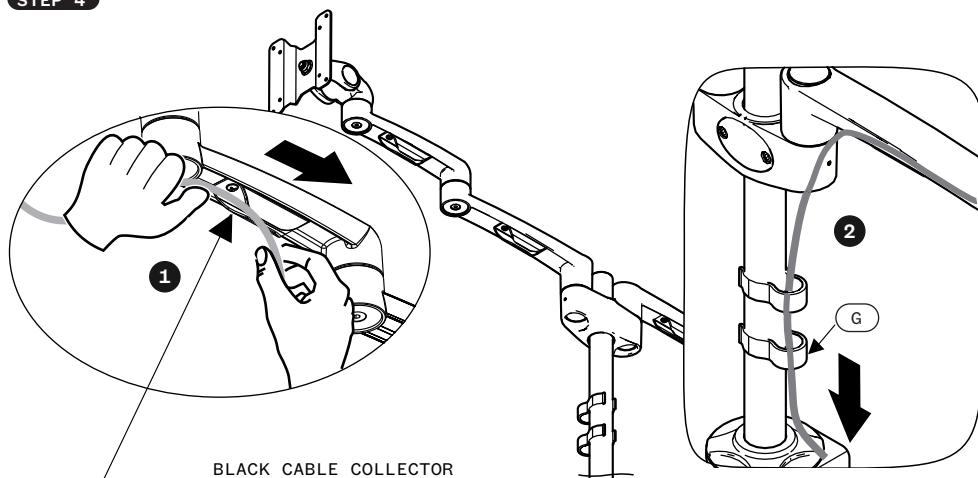


75MM × 75MM
100MM × 100MM
VESA INTERFACE



Mount both monitors to the VESA brackets with the provided screws.

STEP 4

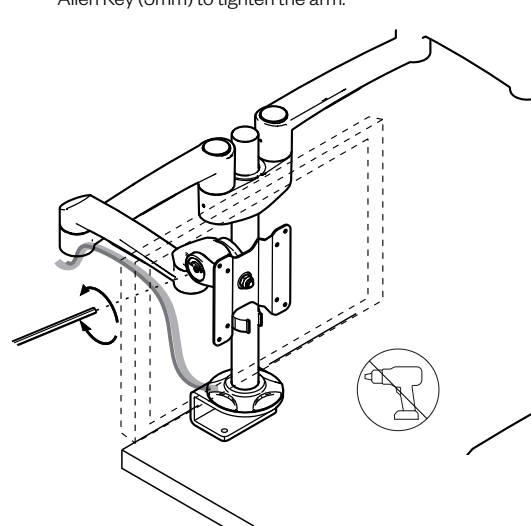


BLACK CABLE COLLECTOR

Finish installation by directing the cables from the monitors through both black cable collectors. Lastly, direct the cable further down the pole and attach all cable clips to keep them in place.

STEP 5

When the joint is loose, please use the Allen Key (5mm) to tighten the arm.



Adjustment: Use the Allen key (K) to adjust the tension to correspond to the weight of the monitor. Twist the Allen key in a clockwise direction for heavier monitors, and counterclockwise for lighter monitors

Weight capacity for ~14kg monitors.
Loading capacity could be reduced if the monitor size is greater than 26 inches or if the thickness exceeds 5,5 cm.

CAUTION:

- There are many components used in the construction of this unit.
- These loose items should be kept away from young children while assembling your unit.
- Please consult authorized service personnel for the installation of this unit.