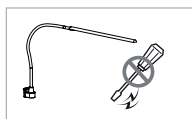
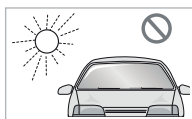


CAUTION



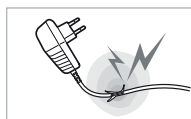
Do not repair, disassemble, or modify under any circumstances.



Do not place near any heat sources or in direct sunlight.



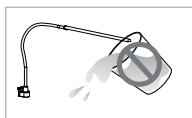
Use ONLY the supplied AC power adaptor.



Do not use appliances with frayed or damaged electrical cords.



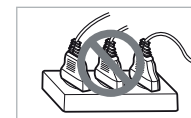
Do not touch electrical appliances with wet hands or when liquids are present.



Please keep the light and all appliances dry and clean.



Clean only with a soft dry cloth and do not use solvents or cleaning solutions.



Never overload electrical circuits as it may cause electrical shock or fire.

PRODUCT SPECIFICATION

PART NUMBER	436-T50G (Gray) : 436-T50W (White)
Color Temp (Kelvin)	4000 \pm 200 K
CRI	RA \geq 93
Brightness (50 cm distance)	560 / 450 / 340 / 224 / 112 / Lux \pm 10%
Lumen	400 lm \pm 10
Eco-timer	4 Hours
Expected life time	50 000 Hours
AC / DC adapter	AC 220~240V, DC 12V \approx 420 mA
Power Consumption	7 W \pm 10%
Weight	540g
Operating temperature	-10 — 40 °C

ADVANTAGES OF CONCEPTUM LED



ECO-friendly light

It provides a safe, comfortable, consistent light that stimulates concentration without eye strain. It contains no mercury or environmentally harmful substances.



Low power consumption

It consumes 80% less power than a typical fluorescent light.



Extraordinary Long lifetime

Lasts up to 40 times longer than a typical incandescent bulb. (Used 5 hours per day it will last up to 22 years)

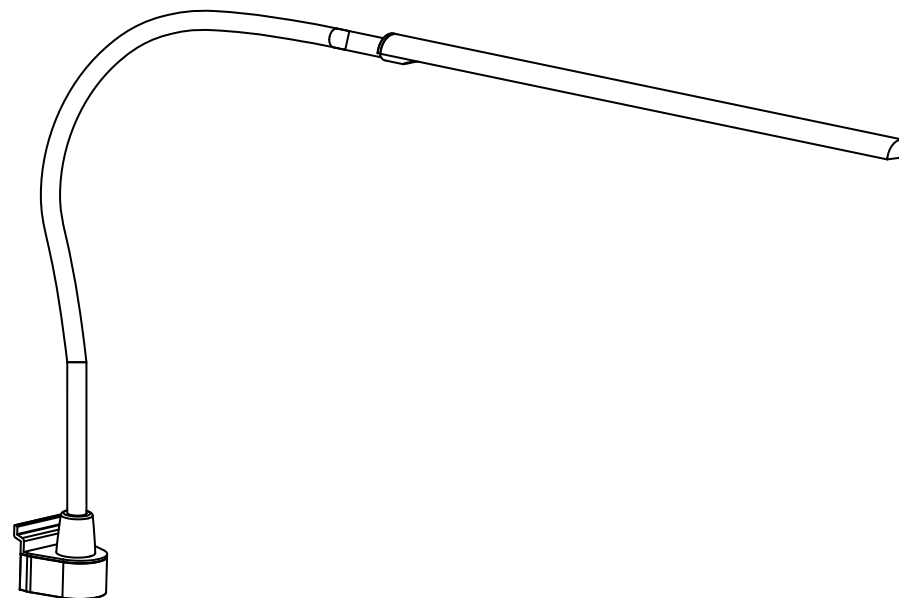


Flicker Free Light

Reduce eye strain without the flickering present in both incandescent and fluorescent lights.

Conceptum Lamp

Flicker-Free



Thank you for purchasing the Conceptum Lamp.

Please read the instructions before use to operate Conceptum LED Lamp safely.

We recommend that you keep these instructions.



www.kondator.se

DISPOSAL / RECYCLING



Lamp



PE-LD
Plastic bag



CARTON
Product box

IMPORTANT SAFEGUARDS

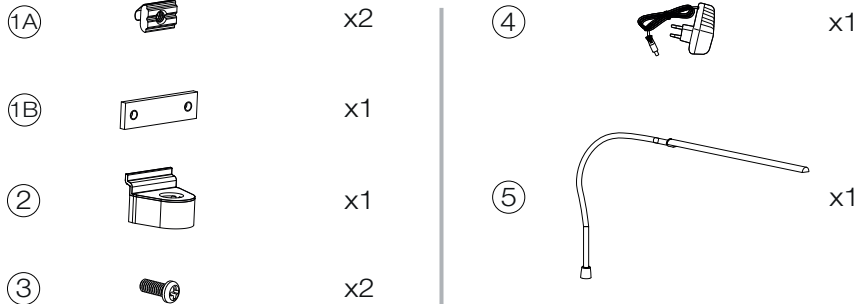
To ensure that your lamp lasts, please see the below recommendations.

1. Make sure that the rating label of the adapter corresponds to the power output of the usage environment.
2. See the user manual for the correct cleaning procedures.
3. Indoor use only.
4. The light source in this luminaire shall only be replaced by the manufacturer, manufacturers service agent or similarly qualified person.

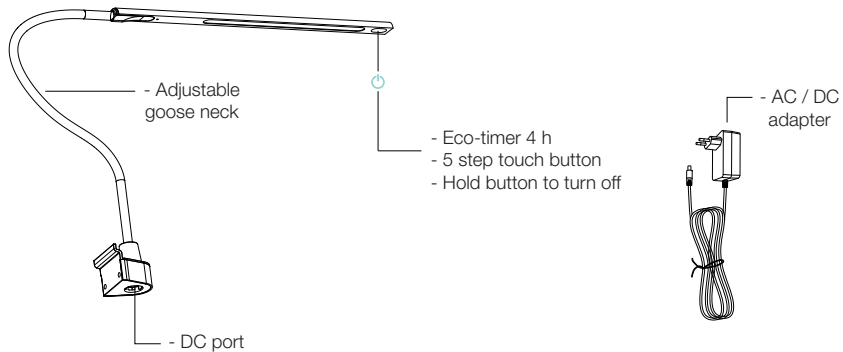
WARRANTY

- Warranty ensures that this product will operate for the period of 2 years based on an average usage of up to 8 hours per day when used in accordance with the directions and specifications stated in this manual.
- If this product fails to conform to the warranty a replacement product is guaranteed upon presentation of a valid sales receipt.

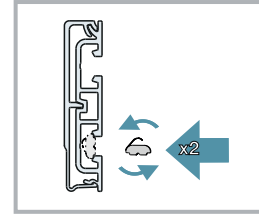
PRODUCT COMPOSITION



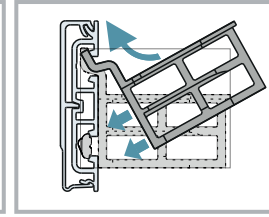
PRODUCT DESCRIPTION



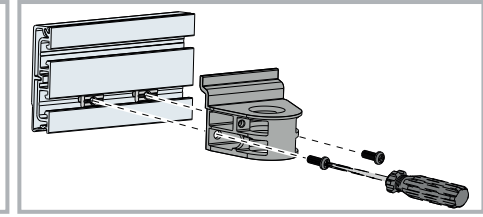
ASSEMBLY AND INSTALLATION



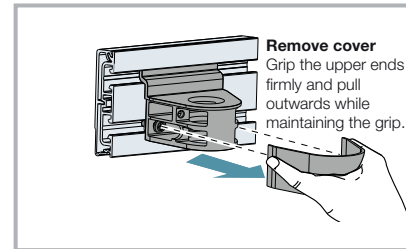
Decide on nut variant ①A or ①B. Place it into the aluminum profile track. The sliding nut ①B has to be inserted from the side.



Remove the bracket's ② cover. (See instruction below). Once off, hook the bracket flange into the upper track.

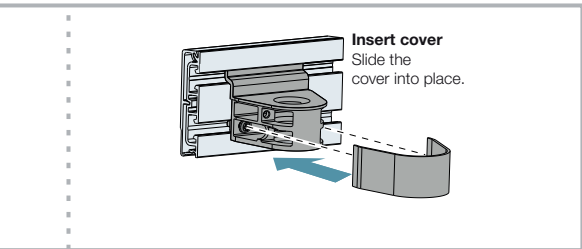


Fully align the brackets screw holes with the nuts. Use screws ③ to fixate the bracket to the aluminum profile.



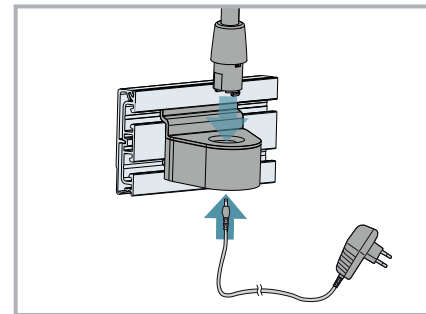
Remove cover

Grip the upper ends firmly and pull outwards while maintaining the grip.

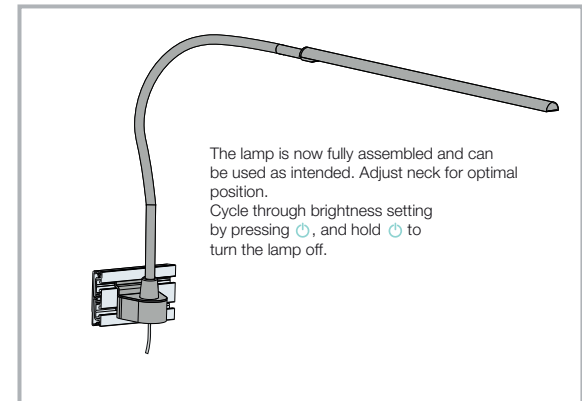


Insert cover

Slide the cover into place.



Connect the power adapter ④ to an outlet. Insert the power cord through the bracket ③ from below and plug it to the bottom of the lamp ⑤.



The lamp is now fully assembled and can be used as intended. Adjust neck for optimal position. Cycle through brightness setting by pressing and hold to turn the lamp off.

NATURAL LIGHT

Conceptum Lamp's CRI is 93. It reproduces a natural type of light source.
CRI = Color Rendering Index

Color Rendering Index (CRI) is the index which shows how close a light source is to natural sunlight. The CRI of natural sunlight is 100%. The higher the CRI value is, the closer it is to natural sunlight.