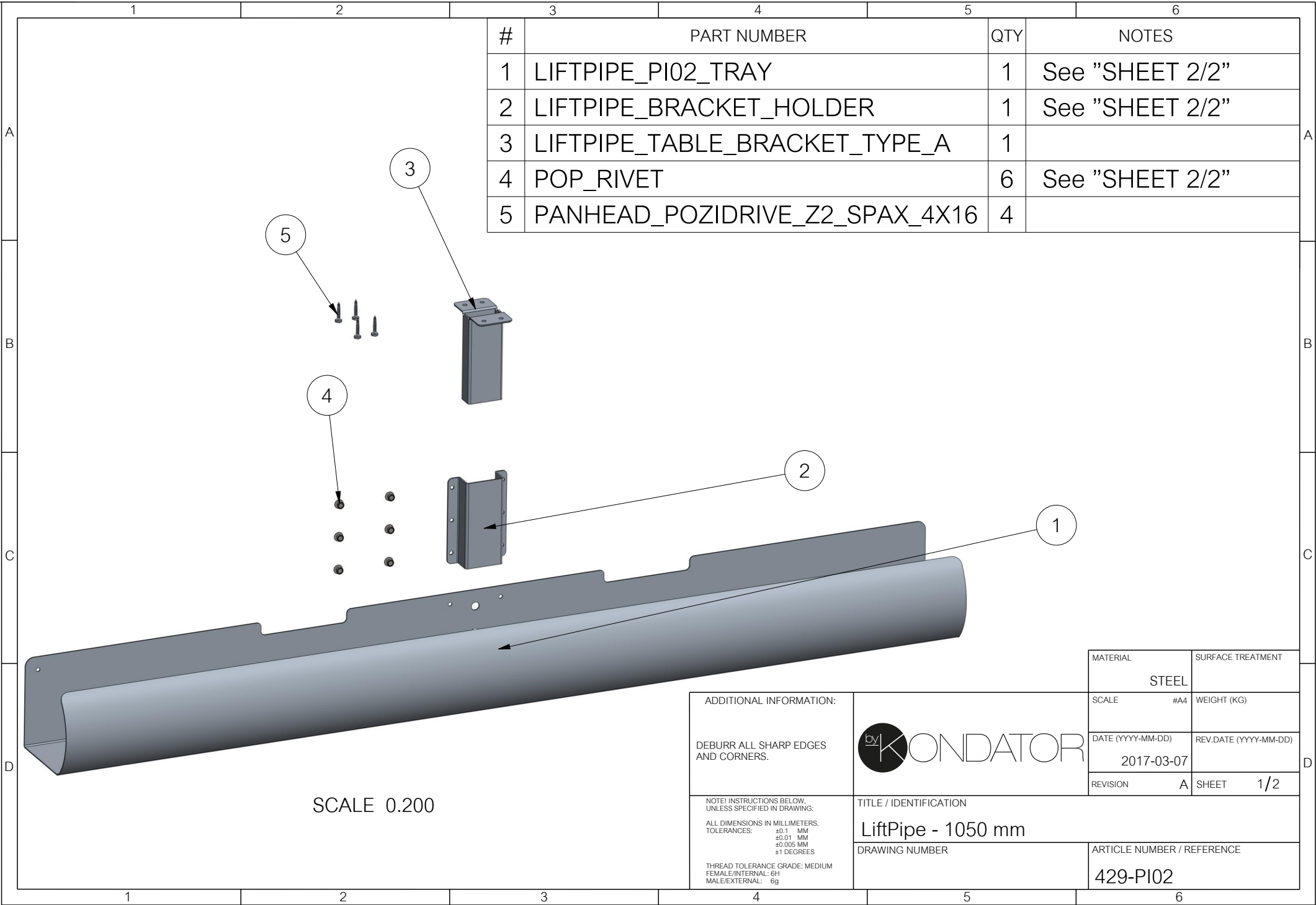


Copying of this document, and giving it to others and the use or communication of the contents thereof, are forbidden without express authority. Offenders are liable to the payment of damages. All rights are reserved in the event of the grant of a patent or the registration of a utility model or design.



#	PART NUMBER	QTY	NOTES
1	LIFTPIPE_PI02_TRAY	1	See "SHEET 2/2"
2	LIFTPIPE_BRACKET HOLDER	1	See "SHEET 2/2"
3	LIFTPIPE_TABLE_BRACKET_TYPE_A	1	
4	POP_RIVET	6	See "SHEET 2/2"
5	PANHEAD_POZIDRIVE_Z2_SPAX_4X16	4	

SCALE 0.200

ADDITIONAL INFORMATION:  
  
DEBURR ALL SHARP EDGES  
AND CORNERS.

NOTE! INSTRUCTIONS BELOW,  
UNLESS SPECIFIED IN DRAWING:  
  
ALL DIMENSIONS IN MILLIMETERS.  
TOLERANCES:   ±0.1 MM  
                  ±0.01 MM  
                  ±0.005 MM  
                  ±1 DEGREES  
  
THREAD TOLERANCE GRADE: MEDIUM  
FEMALE/INTERNAL: 6H  
MALE/EXTERNAL: 6g



TITLE / IDENTIFICATION  
  
LiftPipe - 1050 mm

DRAWING NUMBER

MATERIAL	STEEL	SURFACE TREATMENT	
SCALE	#A4	WEIGHT (KG)	
DATE (YYYY-MM-DD)	2017-03-07	REV.DATE (YYYY-MM-DD)	
REVISION	A	SHEET	1/2

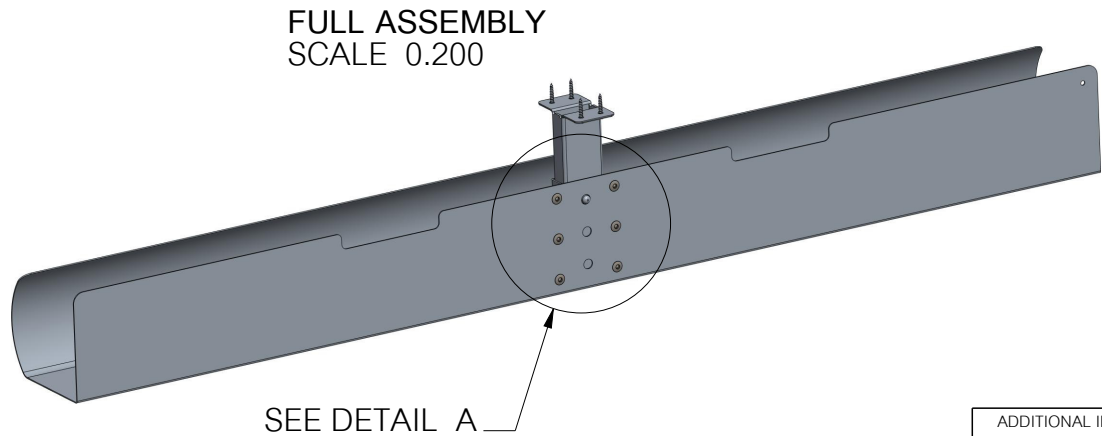
ARTICLE NUMBER / REFERENCE

429-PI02

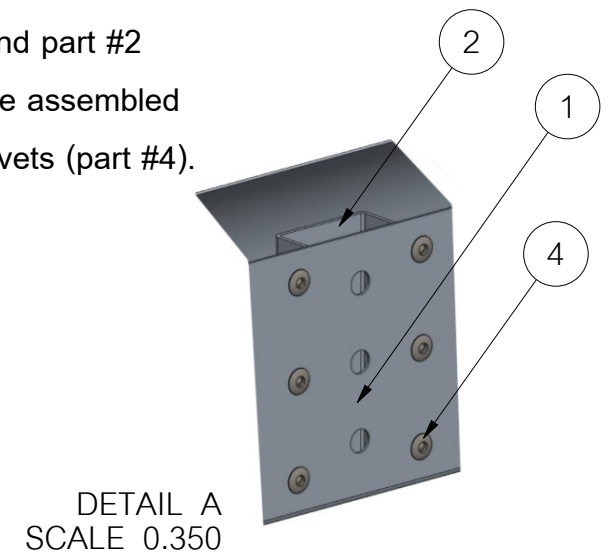



Copying of this document, and giving it to others and the use or communication of the contents thereof, are forbidden without express authority. Offenders are liable to the payment of damages. All rights are reserved in the event of the grant of a patent or the registration of a utility model or design.

#	PART NUMBER	QTY	NOTES
1	LIFTPipe_PI02_TRAY	1	
2	LIFTPipe_BRACKET HOLDER	1	
3	LIFTPipe_TABLE_BRACKET_TYPE_A	1	
4	POP_RIVET	6	
5	PANHEAD_POZIDRIVE_Z2_SPAX_4X16	4	



Part #1 and part #2  
need to be assembled  
with six rivets (part #4).



ADDITIONAL INFORMATION:		SCALE	#A4	WEIGHT (KG)
DEBURR ALL SHARP EDGES AND CORNERS.		DATE (YYYY-MM-DD)	REV.DATE (YYYY-MM-DD)	
		2017-03-07		
		REVISION	A	SHEET 2/2
NOTE! INSTRUCTIONS BELOW, UNLESS SPECIFIED IN DRAWING:  ALL DIMENSIONS IN MILLIMETERS. TOLERANCES:       ±0.1   MM ±0.01   MM ±0.005 MM ±1 DEGREES  THREAD TOLERANCE GRADE: MEDIUM FEMALE/INTERNAL: 6H MALE/EXTERNAL: 6g	TITLE / IDENTIFICATION		LiftPipe - 1050 mm	
	DRAWING NUMBER	ARTICLE NUMBER / REFERENCE		
		429-PI02		