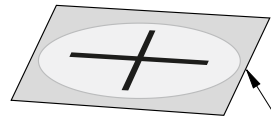
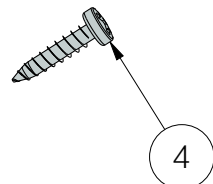
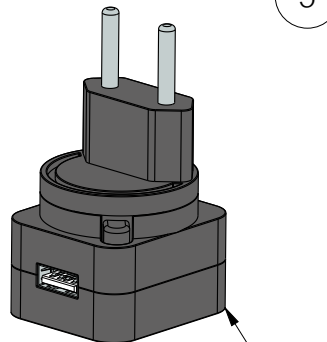
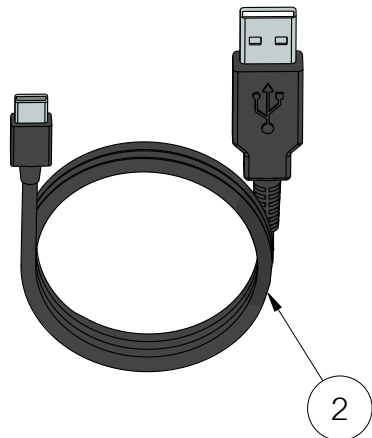
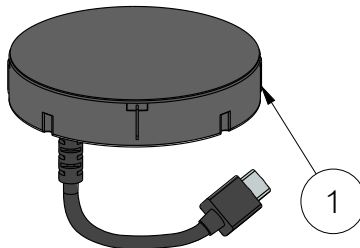
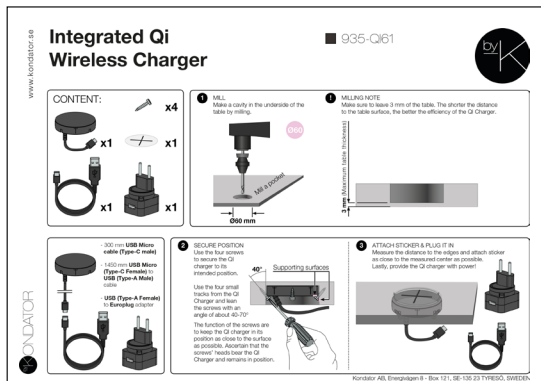


#	CONTENT	QTY	CONTENT SPECIFICATION NOTES		PACKING NOTES
1	QI Charger with USB cable	1	300 mm cable ( <b>Type-C Male USB port</b> )		See <b>SHEET 2/2</b>
2	USB Micro to USB cable	1	1450 mm cable ( <b>Type-C Female USB port TO Type-A Male USB port</b> )		See <b>SHEET 2/2</b>
3	Europlug adapter to USB	1	<b>Electrical Type-C plug TO Type-A Female USB port</b>		See <b>SHEET 2/2</b>
4	Wood screws	4	<b>Panhead pozidriv 3x16 mm OR panhead pozidrive 4x16</b>		See <b>SHEET 2/2</b>
5	935-QI61 - Adhesive Sticker	1	See <b>"935-QI61_Sticker_180814.pdf"</b>		See <b>SHEET 2/2</b>
6	A4 Manual	1	See <b>"935-QI61 User manual.pdf"</b>		See <b>SHEET 2/2</b>

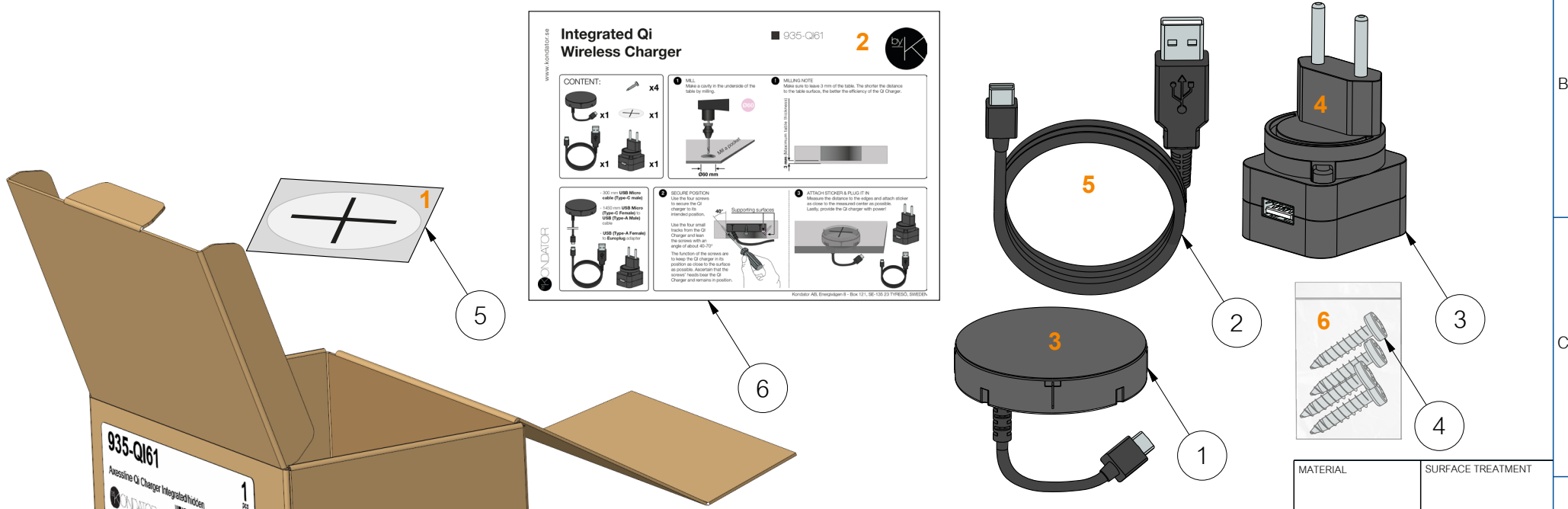





ADDITIONAL INFORMATION:		TITLE / IDENTIFICATION	
NOTE! INSTRUCTIONS BELOW, UNLESS SPECIFIED IN DRAWING:  ALL DIMENSIONS IN MILLIMETERS. TOLERANCES: ±0.1 MM ±0.01 MM ±0.005 MM ±1 DEGREES  THREAD TOLERANCE GRADE: MEDIUM FEMALE/INTERNAL: 6H MALE/EXTERNAL: 6g		Axessline Qi Charger Integrated BOM and Box	
		DRAWING NUMBER	ARTICLE NUMBER / REFERENCE
			935-QI61 / (OEXH703)

MATERIAL	SURFACE TREATMENT	
SCALE	#A4	WEIGHT (KG)
	0.500	
DATE (YYYY-MM-DD)	REV.DATE (YYYY-MM-DD)	
2018-04-23		
REVISION	A	SHEET 1/2

#	CONTENT	QTY	CONTENT PACKING NOTES	PACKING ORDER
1	QI Charger with USB cable	1	Pack inside product carton box <b>without plastic bag</b>	3
2	USB Micro to USB cable	1	Pack inside product carton box <b>without plastic bag</b>	5
3	Europlug adapter to USB	1	Pack inside product carton box <b>without plastic bag</b>	4
4	Wood screws	4	<b>Pack all screws inside one small plastic zip bag, and put inside product carton box</b>	6
5	935-QI61 - Adhesive Sticker	1	<b>Put in the very bottom of carton box, to avoid the sticker from damage</b>	1
6	A4 Manual	1	<b>Fold twice and put on top of the sticker</b>	2



Adhere product label here.  
See "935-QI61 - Product Box Label.pdf"

ADDITIONAL INFORMATION:		SCALE	#A4	WEIGHT (KG)
		0.500		
		DATE (YYYY-MM-DD)	REV.DATE (YYYY-MM-DD)	
		2018-04-23		
		REVISION	A	SHEET 2/2
NOTE! INSTRUCTIONS BELOW, UNLESS SPECIFIED IN DRAWING:	TITLE / IDENTIFICATION			
ALL DIMENSIONS IN MILLIMETERS. TOLERANCES: ±0.1 MM ±0.01 MM ±0.005 MM ±1 DEGREES	Axessline Qi Charger Integrated BOM and Box			
THREAD TOLERANCE GRADE: MEDIUM FEMALE/INTERNAL: 6H MALE/EXTERNAL: 6g	DRAWING NUMBER		ARTICLE NUMBER / REFERENCE	
			935-QI61 / (OEXH703)	