

# QuickClick



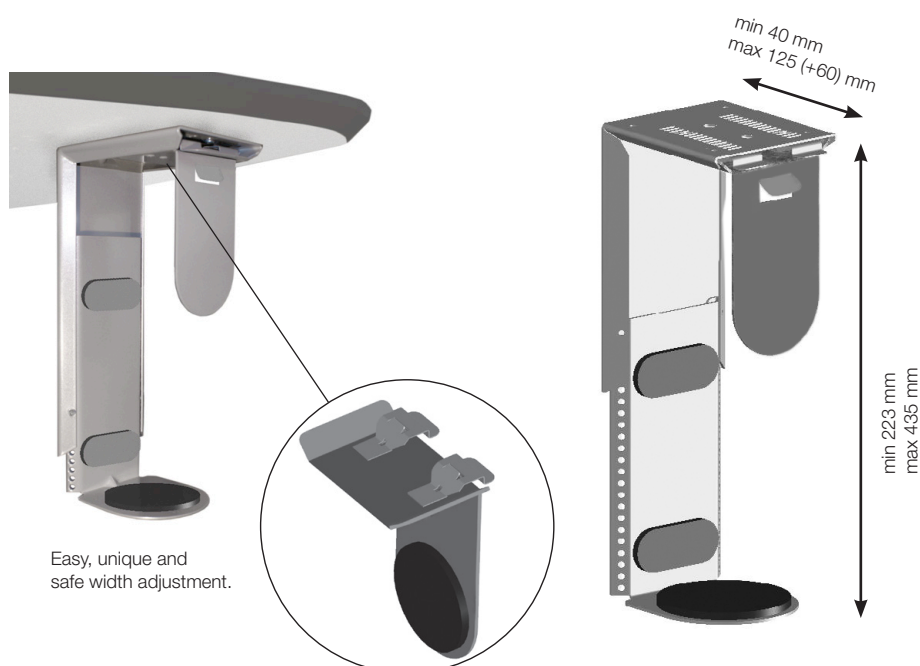
## Fast, safe & functional!

Elegant design and safe use for vertical assembly of small, medium and slim computers. QuickClick is adjusted very easily using the quick-lock "Ratchet Control", for absolutely secure locking.

Dimensions: Width min/max 40-125 mm, Height min/max 225-435 mm. Expansion Rail included for increased width to 185 mm.



Add a LiftSystem Sleigh, rotates 360° (427-WA15) and LiftSystem Rail (430-WA11) for slideable use.



### SPECIFICATIONS

- Made for the new generation computers.
- Quick-lock "Ratchet Control"
- Requires no extra assembly
- Firm design
- Premounted rubber pads
- Registered design  
RCD 001785353
- 427-1203 Silver
- 427-1203W White
- 427-1203B Black

#### Accessories

- |          |                                   |
|----------|-----------------------------------|
| 427-WA15 | LiftSystem Sleigh                 |
| 430-WA11 | LiftSystem Rail,<br>length 400 mm |

Easy, unique and  
safe width adjustment.